

SHEYENNE TELE-FORK

OWNERS MANUAL OPERATOR INSTRUCTIONS PARTS BOOK



7TH & Lenham Ave *PO Box 647
Cooperstown ND 58425
1-800-797-1883
701-797-2700 * 701-797-2584 Fax
www.sheyennemfg.com

TABLE OF CONTENTS

| | |
|--|----|
| REFERENCE INFORMATION..... | 2 |
| SAFETY INSTRUCTIONS..... | 3 |
| ASSEMBLY REQUIREMENTS..... | 4 |
| INSTALLING THE QUICK-TACH TO THE TELE-FORK..... | 5 |
| INSTALLING THE QUICK-TACH TO THE SKID-STEER..... | 6 |
| CONNECTING THE HYDRAULICS..... | 6 |
| OPERATING THE TELE-FORK..... | 7 |
| PARTS SECTION..... | 8 |
| TELE-FORK WARRANTY..... | 18 |

Reference Information

Write the correct information for your Tele-Fork in the space below. Always use this number when referring to your Tele-Fork.

Tele-Fork Serial Number _____

Notes: _____

Your Sheyenne Tooling & Manufacturing
Dealer: _____

Address: _____

Phone Number: _____

Safety Instructions

“Safety is the Operator’s responsibility!”

The Sheyenne Tele-Fork is designed to give maximum safety; but no machine design can prevent operator error or carelessness.

The use of this extremely efficient and maneuverable Tele-Fork requires a qualified operator who understands the working capabilities of both the skid steer and the Telefork.

Safe operation needs a qualified operator!!

- Check that the Quick-Tach levers are in the locked position.
- **DO NOT** permit personnel to be in the work area when operating the skid steer and Tele-Fork.
- **DO NOT** make any adjustments or repairs on the Tele-Fork while the skid steer engine is running.
- When learning to operate the Tele-Fork, do it at a slow rate in an area clear of bystanders.
- **DO NOT** operate the Tele-Fork near powerlines. Give wide clearance to **ALL** utility lines.
- **DO NOT** go near hydraulic leaks. **Always** turn off engine before repairing hydraulic hoses.
- Be aware of work area conditions. ie., excessive slope, obstructions, holes, bumps etc.
- Know the weight of the materials being handled. Avoid exceeding the Rated Operating Capacity of the skid steer and the Tele-Fork.

Assembly Requirements

The Tele-Fork is designed to fit on most quick-tach skid steer loaders and comes fully assembled except for the hoses to the skid steer and a set of couplers. *These are not provided because each skid steer has different placements and types of hydraulic hookups.

Materials Needed:

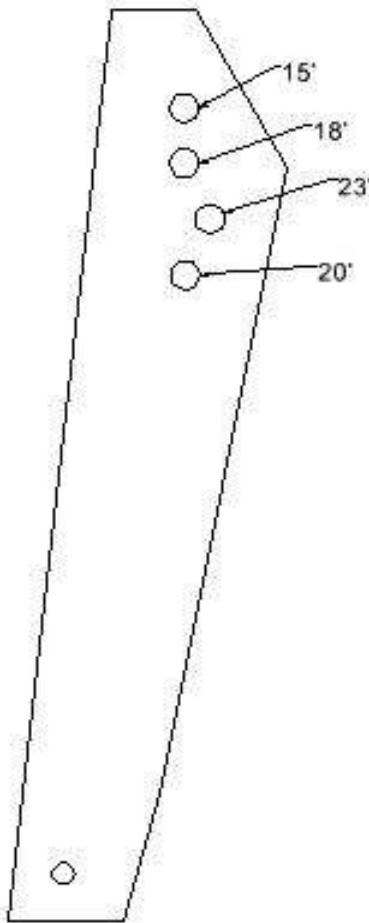
- 1.) One (1) piece of three-eighth inch (3/8") by approximately 126" inches long hydraulic hose with one-half inch (3/8") NPT fittings on both ends. (Hose should be rated at 2500 psi or higher and length may vary dependent on skid steer model.)
 - 2.) One (1) piece of three-eighth inch (3/8") by approximately 77" inches long hydraulic hose with one-half inch (3/8") NPT fittings on both ends. (Hose should be rated at 2500 psi or higher and length may vary dependent on skid steer model.)
 - 3.) One (1) piece "Male" coupler, type depending on skid steer.
 - 4.) One (1) piece "Female" coupler, type depending on skid steer.
- ✓ Assemble couplers to each hose using thread sealing compound.
 - ✓ Assemble each hose assembly from above into the fittings on the Tele-Fork using thread sealing compound.
 - ✓ Allow to dry thoroughly before testing for leaks.

Installing The Quick-Tach to the Tele-Fork

Always inspect the Quick-Tach and Tele-Fork mount before installation.

Match up bottom hinges of Quick-Tach with hinges of Tele-Fork. Attach upper link to Quick-Tach and Forklift. When attaching Forklift to upper link, hole placement is dependant upon rollback of skid-steer. Please consult your skid steer's tipping load. The diagram below represents the angle between the Quick-Tach and the Tele-Fork.

WHEN IN USE WITH A 9.125"
UPPER LINK (CENTER TO CENTER)



Installing The Quick-Tach to the Skid-Steer

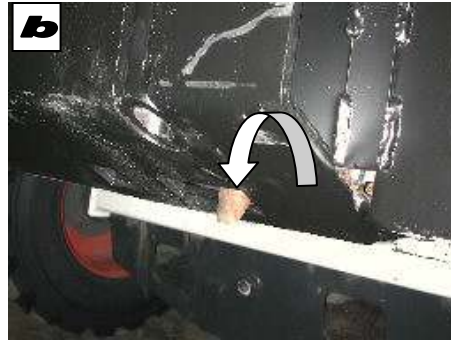
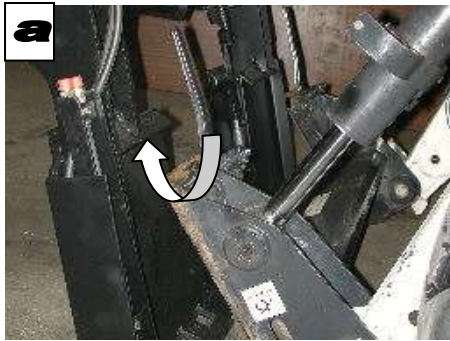
Always inspect the Quick-Tach and Tele-Fork mount before installation.

Enter the loader.

With the operator in the seat and appropriate safety restraints in place, start the engine.

Raise the lift arms slightly and tilt the skid steer mounting plate forward.

Drive the loader forward until the top edge of the skid steer mounting plate is completely under the top flange of the Tele-Fork. Be sure the Quick-Tach levers do not hit the Tele-Fork. See view **a**.



Tilt the skid steer mounting plate backward until the Tele-Fork is slightly off the ground.

Stop the engine and exit the loader.

Push down on the Quick-Tach levers until they are fully engaged in the locked position and wedges are fully extended through the mounting frame holes. See view **b** above.

Connecting The Hydraulics

To Connect: Relieve hydraulic pressure. Remove any dirt or debris from the surface of both the male and female couplers, and from the outside diameter of the male coupler. Visually check the couplers for corroding, cracking, damage, or excessive wear. If any of these conditions exist, the coupler(s) must be replaced.

Install the male coupler into the female coupler and vice versa.

To Disconnect: Relieve hydraulic pressure. Rotate the ball release sleeve so that the grooves are aligned with the pins in the female coupler. Push the couplers together to relieve any resistance on the sleeve.

Operating the Tele-Fork

The Tele-Fork's retracted length is approximately 8 feet, extended length approximately 12 feet 8 inches.

EXTREME CAUTION must be taken as the Tele-Fork is extended. A small movement of the loader will create a greater movement at the extended Tele-Fork end. The ground should be relatively free of obstructions and any foreign materials that would cause excessive movement on the end of the forks.

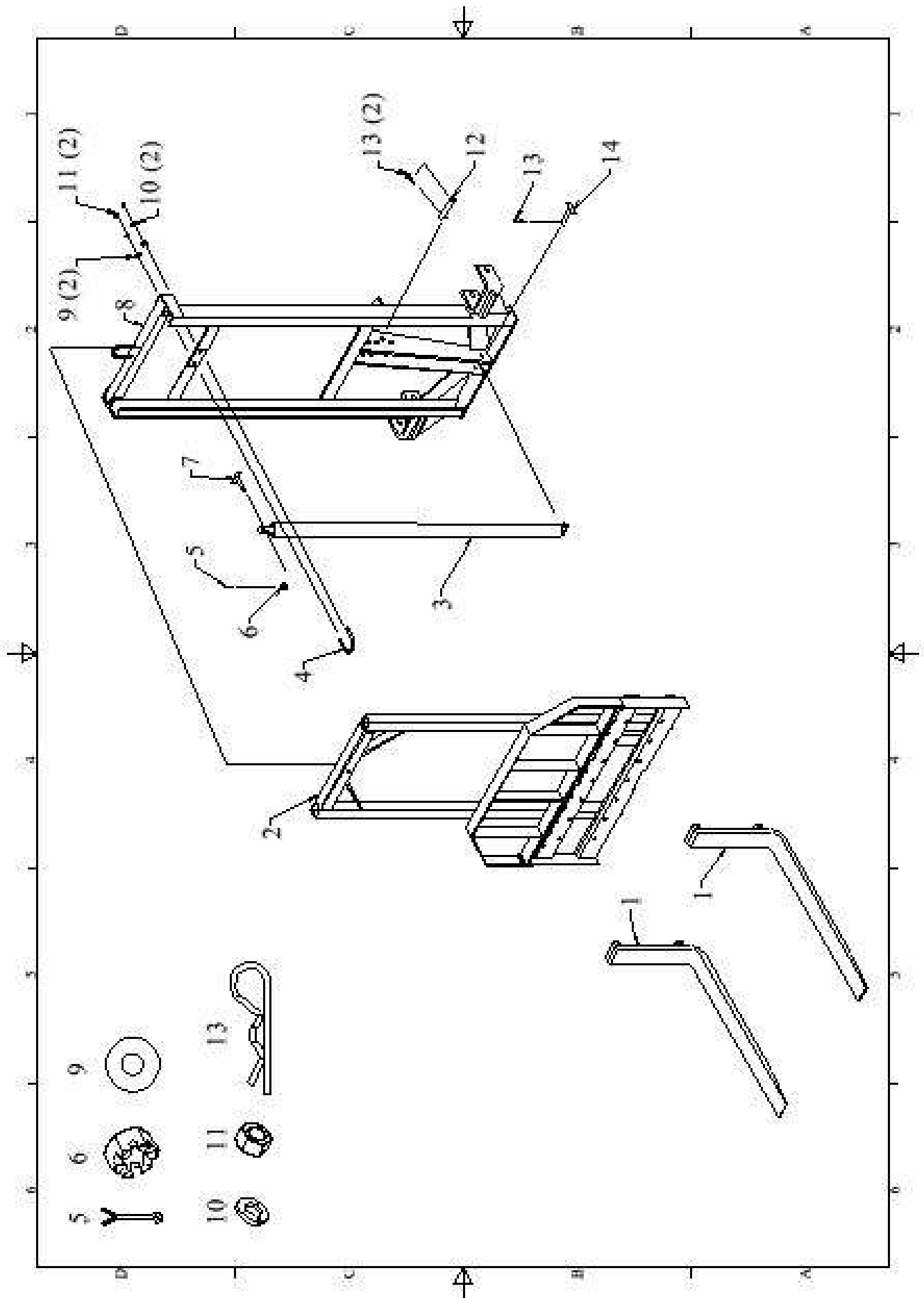
The Tele-Fork should always be retracted and lowered to the ground before the operator leaves the machine.

The maximum lifting capacity of the Tele-Fork is 2000 lbf. However, the maximum lifting capacity for the Quick-Tach Tele-Fork will usually be smaller due to the maximum tipping load of your respective skid steer. Please consult your skid steer manual or dealer to determine your skid steer's tipping load.* For safety reasons the maximum tipping load of the machine should be taken into account before operation of the Tele-Fork. As with any machinery use, extreme care must be taken to assure safety.

The class II or std forks (dependant upon which forklift model you purchased) are both 1.25 in thick, by 4 in wide and either 42, 48, or 60 inches long. Each are rated by the manufacturer at a maximum lifting of 3000 lbf/set of forks. Therefore each individual fork is designed to lift 1500 lbf and should not be exceeded by the operator.

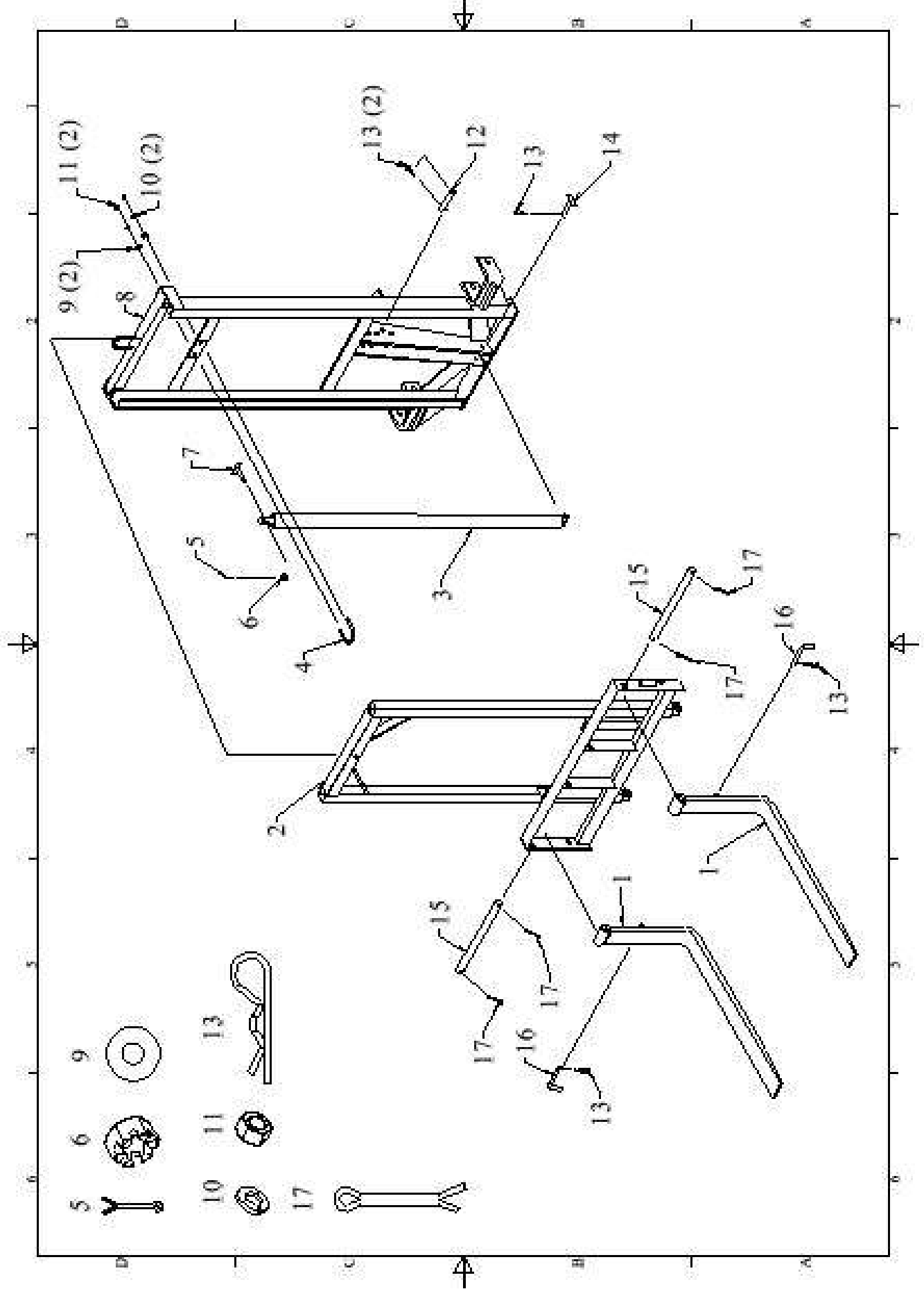
PARTS SECTION

TELE-FORK



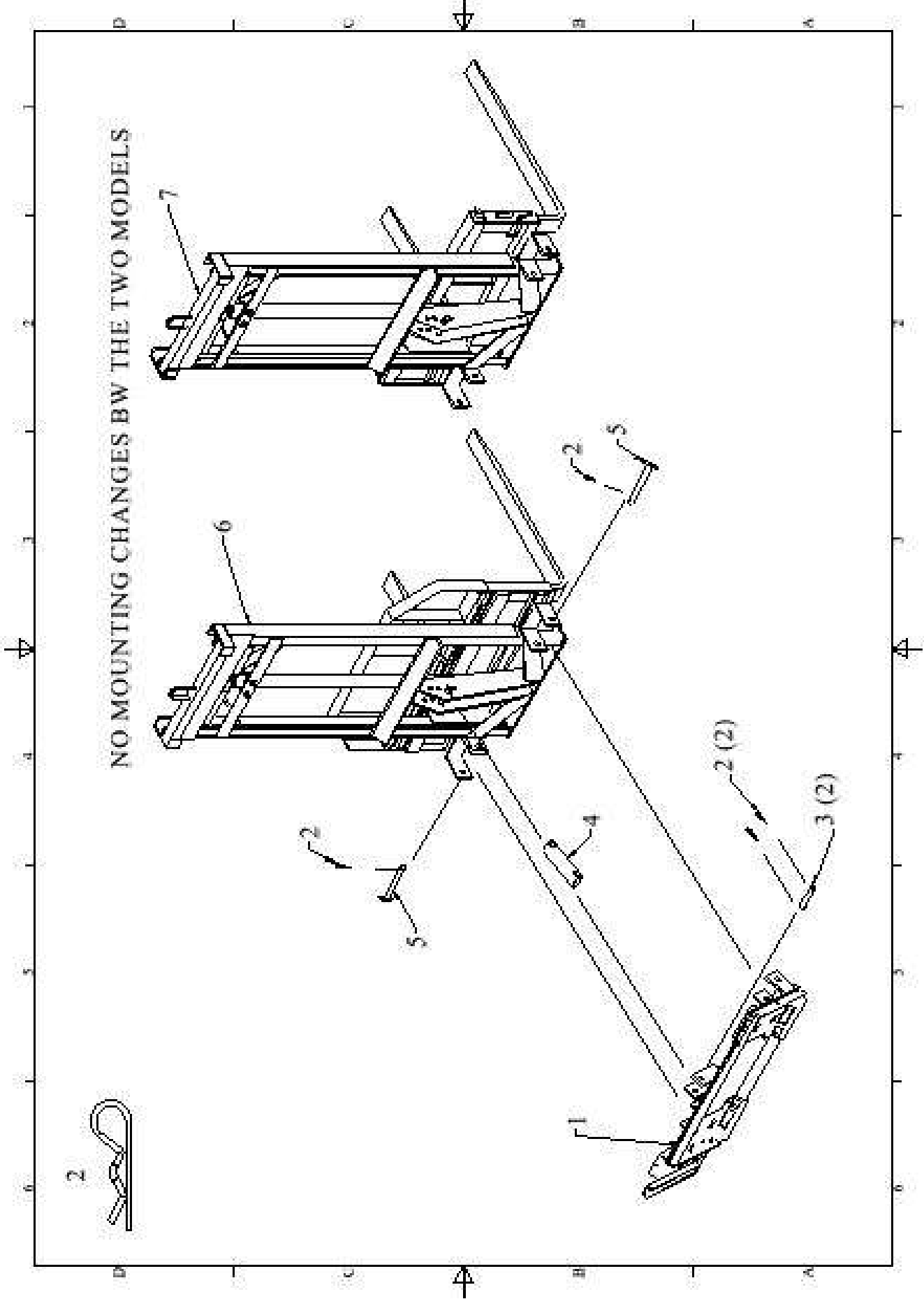
TELE-FORK FRAME CARRIAGE STYLE (604-0-0003)

| Item | Part# | Description | Qty |
|-------------|--------------|-------------------------------|------------|
| 1 | 604-2-0019 | Forklift Fork | 2 |
| 2 | 604-2-0020 | Inner Frame | 1 |
| 3 | 604-3-0085 | Cylinder 2.5" x 70" | 1 |
| 4 | 604-3-0091 | U-Bolt | 1 |
| 5 | 900-23025 | 1/8" x 1" Cotter Pin | 1 |
| 6 | 900-06058 | Slotted Hex Nut – 3/4" –16UNF | 1 |
| 7 | 604-2-0024 | Top Cylinder Pin | 1 |
| 8 | 604-2-0004 | Outer Frame | 1 |
| 9 | 900-11035 | 1/2" SAE Flatwasher | 2 |
| 10 | 900-11013 | 1/2" Split Lock Washer | 2 |
| 11 | 900-06009 | 1/2" – 13 UNC GR5 Hex Nut ZP | 2 |
| 12 | 604-3-0057 | Upper Link Pin | 1 |
| 13 | 900-25005A | Snap Pin | 3 |
| 14 | 604-2-0027 | Bottom Cyl Pin | 1 |



TELE-FORK STANDARD CARRIAGE STYLE (604-0-0001)

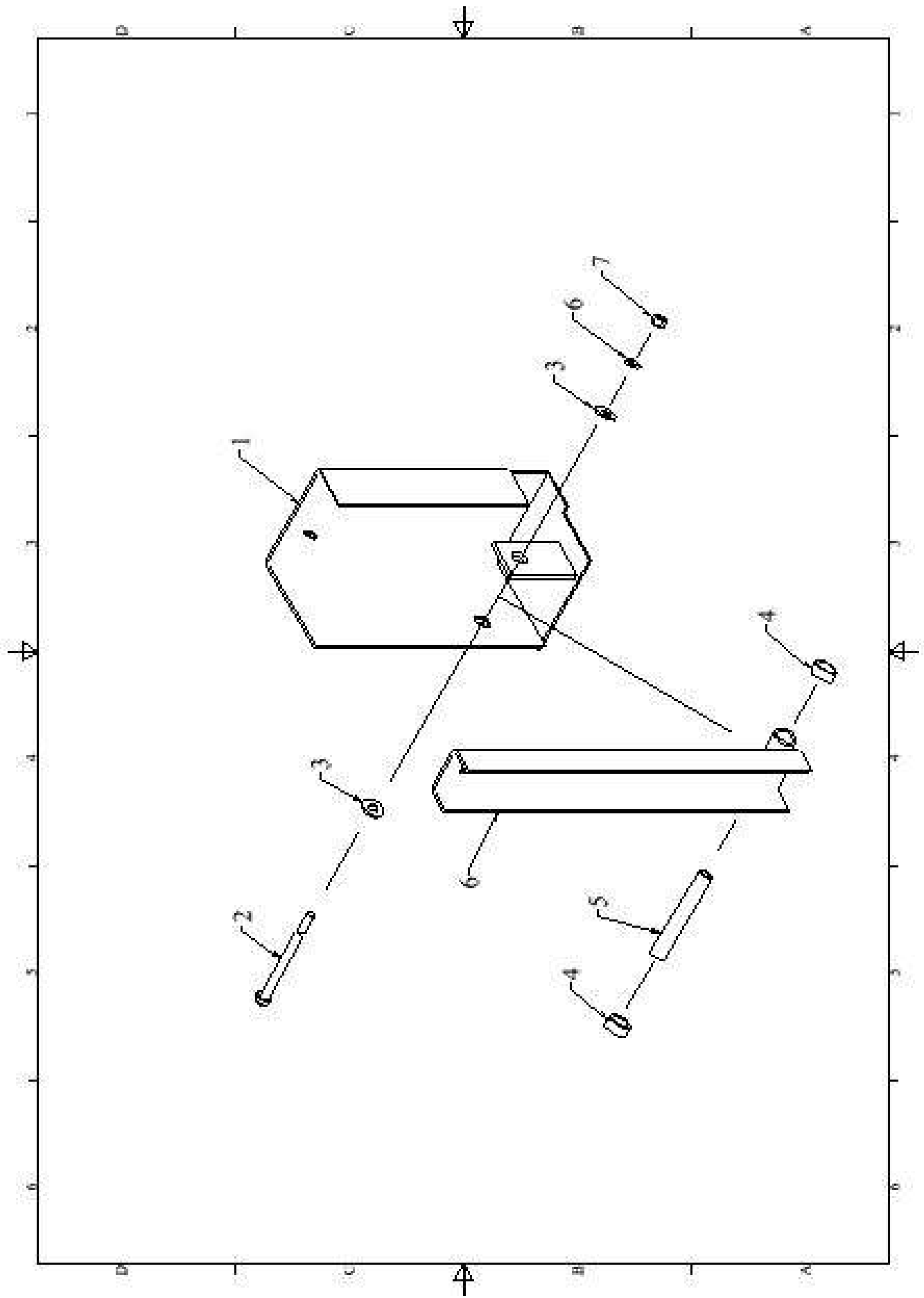
| Item | Part# | Description | Qty |
|------|------------|-------------------------------|-----|
| 1 | 604-2-0011 | Forklift Fork | 2 |
| 2 | 604-2-0009 | Inner Frame | 1 |
| 3 | 604-3-0085 | Cylinder 2.5" x 70" | 1 |
| 4 | 604-3-0091 | U-Bolt | 1 |
| 5 | 900-23025 | 1/8" x 1" Cotter Pin | 1 |
| 6 | 900-06058 | Slotted Hex Nut – 3/4" –16UNF | 1 |
| 7 | 604-2-0024 | Top Cylinder Pin | 1 |
| 8 | 604-2-0004 | Outer Frame | 1 |
| 9 | 900-11035 | 1/2" SAE Flatwasher | 2 |
| 10 | 900-11013 | 1/2" Split Lock Washer | 2 |
| 11 | 900-06009 | 1/2" – 13 UNC GR5 Hex Nut ZP | 2 |
| 12 | 604-3-0057 | Upper Link Pin | 1 |
| 13 | 900-25005A | Snap Pin | 5 |
| 14 | 604-2-0027 | Bottom Cyl Pin | 1 |
| 15 | 604-3-0050 | Forklift Bar | 2 |
| 16 | 604-3-0070 | Standing Latch Pin | 2 |
| 17 | 900-23081 | 5/16" 2.5" Cotter Pin | 4 |



TELE-FORK W/QUICK-TACH

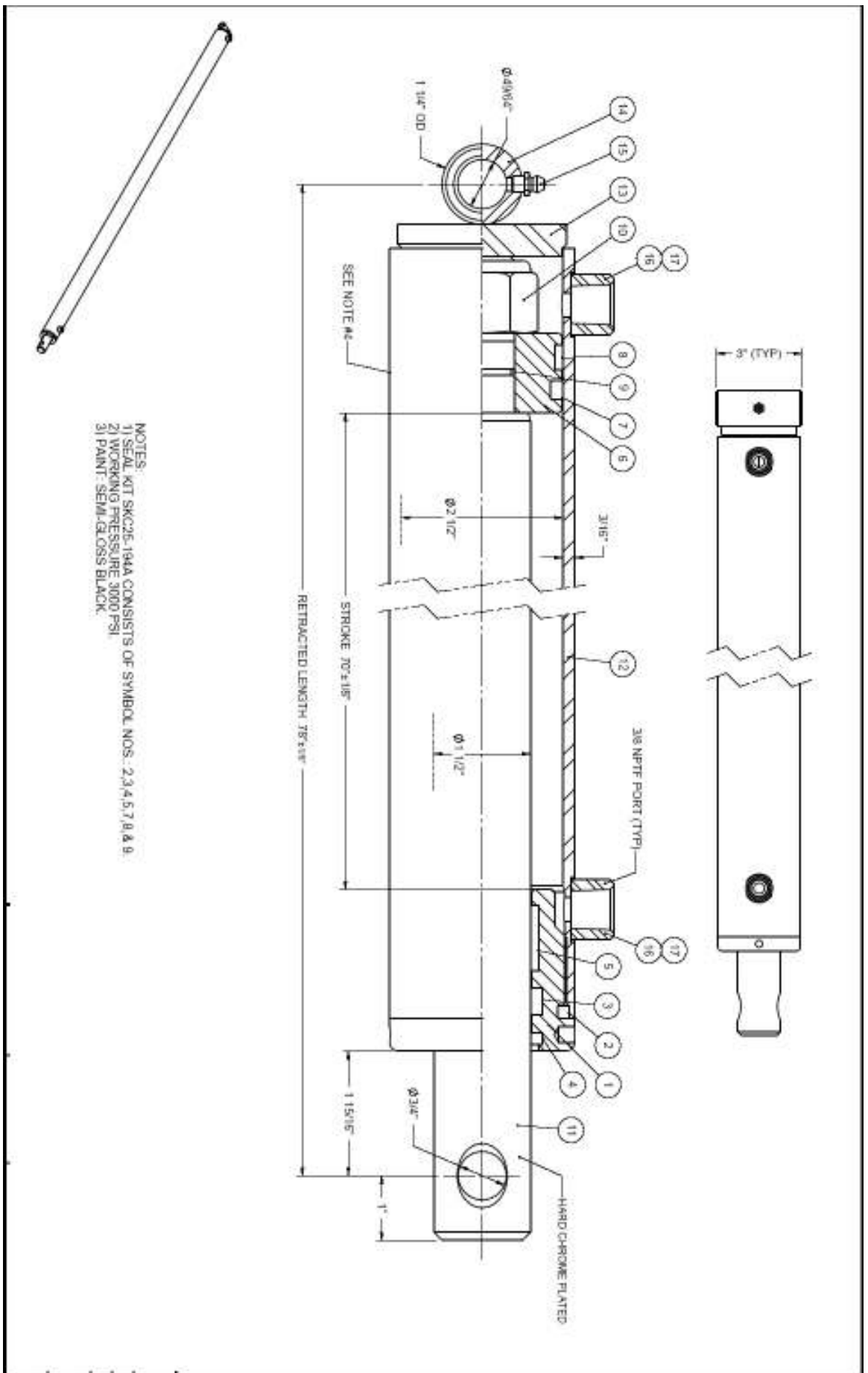
| Item | Part# | Description | Qty |
|-------------|--------------|---------------------|------------|
| 1 | 604-2-0002 | Quick-Tach Mast W/A | 1 |
| 2 | 900-25005A | Snap Pin | 6 |
| 3 | 604-3-0057 | Upper Link Pin | 2 |
| 4 | 604-2-0001 | Upper Link W/A | 1 |
| 5 | 604-2-0013 | Quick-Tach Pin | 2 |
| 6* | 604-0-0001 | Forklift | 1 |
| 7* | 604-0-0004 | Forklift | 1 |

*** Dependant upon which Forklift Carriage you purchased**



HOSE SHIELD

| Item | Part# | Description | Qty |
|-------------|--------------|--------------------------|------------|
| 1 | 604-2-0014 | Hose Shield W/A | 1 |
| 2 | 900-01137 | 3/8" NC x 5" Hex Bolt G5 | 1 |
| 3 | 900-11033 | 3/8" USS Flatwasher | 2 |
| 4 | 604-3-0069 | Spacer Bushing | 2 |
| 5 | 604-3-0068 | Inner Bushing | 1 |
| 6 | 900-11011 | 3/8" Lockwasher | 1 |
| 7 | 900-06005 | 3/8 - 16 UNC Hex Nut | 1 |
| Not Shown | 310-3-1152 | Spring - .75x4.5x.0815 | 1 |



Please enter information below and

SAVE FOR FUTURE REFERENCE

TELE-FORK WARRANTY

SHEYENNE TOOLING & MANUFACTURING warrants each new product to be free from defects in material and workmanship. This warranty is applicable only for the normal service life expectancy of the machine or components, not to exceed twelve consecutive months from the date of delivery of the new SHEYENNE TOOLING & MANUFACTURING product to the original purchaser.

Genuine SHEYENNE TOOLING & MANUFACTURING replacement parts and components will be warranted for 90 days from date of purchase, or the remainder of the original equipment warranty period, whichever is longer.

Under no circumstances will it cover any merchandise or components thereof, which in the opinion of the company, has been subject to negligent handling, misuse, alteration, an accident, or if repairs have been made with parts other than those obtainable through SHEYENNE TOOLING & MANUFACTURING.

The company in no way warrants engines, batteries, tires or other trade accessories since these items are warranted separately by their respective manufacturers.

Our obligation under this warranty shall be limited to repairing or replacing, free of charge to the original purchaser, any part that in our judgement shall show evidence of such defect, provided further that such part shall be returned within thirty (30) days from date of failure to SHEYENNE TOOLING & MANUFACTURING.

This warranty shall not be interpreted to render us liable for injury or damages of any kind or nature to person or property.

Except as set forth above, SHEYENNE TOOLING & MANUFACTURING shall have no obligation of liability of any kind on account of any of its equipment and shall not be liable for special or consequential damage. SHEYENNE TOOLING & MANUFACTURING makes no other warranty, express or implied, and, specifically, SHEYENNE TOOLING & MANUFACTURING disclaims any implied warranty of merchantability of fitness for a particular purpose. Some states or provinces do not permit limitations or exclusions of implied warranties of incidental or consequential damages, so the limitations or exclusions in this warranty may not apply.

This warranty is subject to any existing conditions of supply, which may directly affect our ability to obtain materials or manufacture replacement parts.

SHEYENNE TOOLING & MANUFACTURING reserves the right to make improvements in design or changes in specifications at any time, without incurring any obligations to owners of units previously sold.

No one is authorized to alter, modify or enlarge neither this warranty nor the exclusions, limitations and reservations.

I have read and understand the above instructions and warranty. Please complete both copies. **Warranty is invalid until signed and dealer copy is returned to the dealer.**

6/03

Date Purchased _____

Dealership _____

Model Number _____

Serial Number _____

Customer Signature _____

Date _____

Dealer Signature _____

Date _____

Customer Copy

Please enter information below and

SAVE FOR FUTURE REFERENCE

TELE-FORK WARRANTY

SHEYENNE TOOLING & MANUFACTURING warrants each new product to be free from defects in material and workmanship. This warranty is applicable only for the normal service life expectancy of the machine or components, not to exceed twelve consecutive months from the date of delivery of the new SHEYENNE TOOLING & MANUFACTURING product to the original purchaser.

Genuine SHEYENNE TOOLING & MANUFACTURING replacement parts and components will be warranted for 90 days from date of purchase, or the remainder of the original equipment warranty period, whichever is longer.

Under no circumstances will it cover any merchandise or components thereof, which in the opinion of the company, has been subject to negligent handling, misuse, alteration, an accident, or if repairs have been made with parts other than those obtainable through SHEYENNE TOOLING & MANUFACTURING.

The company in no way warrants engines, batteries, tires or other trade accessories since these items are warranted separately by their respective manufacturers.

Our obligation under this warranty shall be limited to repairing or replacing, free of charge to the original purchaser, any part that in our judgement shall show evidence of such defect, provided further that such part shall be returned within thirty (30) days from date of failure to SHEYENNE TOOLING & MANUFACTURING.

This warranty shall not be interpreted to render us liable for injury or damages of any kind or nature to person or property.

Except as set forth above, SHEYENNE TOOLING & MANUFACTURING shall have no obligation of liability of any kind on account of any of its equipment and shall not be liable for special or consequential damage. SHEYENNE TOOLING & MANUFACTURING makes no other warranty, express or implied, and, specifically, SHEYENNE TOOLING & MANUFACTURING disclaims any implied warranty of merchantability of fitness for a particular purpose. Some states or provinces do not permit limitations or exclusions of implied warranties of incidental or consequential damages, so the limitations or exclusions in this warranty may not apply.

This warranty is subject to any existing conditions of supply, which may directly affect our ability to obtain materials or manufacture replacement parts.

SHEYENNE TOOLING & MANUFACTURING reserves the right to make improvements in design or changes in specifications at any time, without incurring any obligations to owners of units previously sold.

No one is authorized to alter, modify or enlarge neither this warranty nor the exclusions, limitations and reservations.

I have read and understand the above instructions and warranty. Please complete both copies. **Warranty is invalid until signed and dealer copy is returned to the dealer.**

Date Purchased _____

Dealership _____

Model Number _____

Serial Number _____

Customer Signature _____

Date _____

Dealer Signature _____

Date _____

Dealer Copy



701 Lenham Ave. - P.O. Box 647

Cooperstown, ND 58425

Office (701) 797-2700

Fax (701) 797-2584

Toll Free (800) 797-1883

www.sheyennemfg.com